

WINGSPAN

Quarterly News for Angel Flight Central's Friends

Fall/Winter 2005

Volume 10, Issue 4



Angel Flight
CENTRAL

1-877-621-7177 • www.angelflightcentral.org

Giving hope wings

INSIDE:

Dream of flying fulfilled

Angel Flight connects
needs with resources

Important role of local
grassroots volunteers
and community advocates

Thank you to our donors
and volunteers

OUR MISSION:

Serving people in need
by arranging charitable
flights for access to
health care and for other
humanitarian purposes.

Angel Flight Central assists children
and adults with free long-distance
transportation and supports pilot and
outreach volunteers in Illinois,
Indiana, Iowa, Kansas, Minnesota,
Missouri, Nebraska, North Dakota,
South Dakota and Wisconsin.

MEMBER ORGANIZATION OF:



Angel Flight helps family fight for life



"We truly from
the bottom of
our hearts thank
you for all you
have done."

Alexis' father, Scott

4-year-old Alexis is all smiles despite her arm cast on her trip to The Mayo Clinic in Rochester, MN. She and her parents have been on nearly 20 Angel Flights. Volunteer Pilot Bruce Martens helps Alexis and her father Scott travel to and from leukemia treatment from their home in Spearfish, SD. Photos provided by AFC Volunteer Pilot Bruce Martens

YOUR LEADERSHIP:

Advisory Council

Founder and Chairman Emeritus
James H. Stevens, Jr.

Members

Stephen T. Carter
Thomas H. Holcom

2005-2006 Board of Trustees

Chairman of the Board/President
Andrew M. DeMarea, *Overland Park, KS*

Past President
Larry W. Wheeler, *Kansas City, MO*

Secretary
Michele Stauffer, *Overland Park, KS*

Treasurer
Melanie Tucker, *Lee's Summit, MO*

Vice President of Resource Development
John W. Kennedy, *Kansas City, MO*

Directors

Donald Estell, *St. Louis, MO*
Dick Gooch, *Kansas City, MO*
Stan Guillaume, *Fl. Lauderdale, FL*
Carl Gum, Jr., *Raymore, MO*
Phil Love, *Kansas City, MO*
Lee Mook, *Floyds Knobs, IN*
David Rainey, *Kansas City, MO*
Eric Roehl, *Crystal Lake, IL*
Tom Zumm, *Chicago, IL*

WING Leaders

Great Lakes WING
John Major, *Crystal Lake, IL*

Heart of America WING
Hunter Christophersen, *Fairway, KS*

Indiana WING
Jack Gabbert, *Carmel, IN*

NorthStar WING
Al Tuntland, *Rochester, MN*

Spirit of St. Louis WING
Sal Slusher, *Wentzville, MO*

Staff Team

Chief Executive Officer/Executive Director
Christel Gollnick

Missions Director
Brenda Champagne

Aviation Specialist/Mission Coordinator
Judy Benjamin

Office Manager/Volunteer Coordinator
Shelley Wales

Development and Outreach Director
Aimee Patton



The Compass

Directional Words *by Vice President of Resource Development
John W. Kennedy*



As I stood on top of an out-building at my grandfather's farm, with the autumn wind blowing through my crew-cut at eight years old, I imagined myself as a fighter jock attempting to land on an aircraft carrier. With my arms stretched out to mimic an airplane, I was moderately successful in reaching the hay thus averting a broken limb. However, as I departed the active runway my limp was pronounced and resulted in my not attempting further missions that day.

Wanting to fly and be a hero is something that often fades as we grow older. The lofty visions at eight years of age vanish with the cold reality of earning a living and parenthood. The desire to fly and make a difference is what brings us to Angel Flight.

In pursuit of helping others, we often make impressions even though it was not the real reason we went a given path. This brings me to Marcel, an eight-year-old boy who recently accompanied his grandmother on her trip to receive treatment to fight cancer. Marcel is an inquisitive boy and we chatted about airplanes, flying, passing landmarks and life. He had never been on a plane before and while sitting in the co-pilot seat his initial apprehension quickly gave way to enjoyment and near joy on our return flight the following weekend. My payment for service came from Marcel telling me that I was now his best friend and he was going to become a pilot.

Angel Flight pilots drop into and out of lives that on a good day can be stressful, filled with anxiety and provide occasional joy. I have received much more than I have given and now living up to the expectations of an eight-year-old boy is my lofty goal. Hopefully Marcel will not follow his mentor and venture off the top of an



Angel Flight Central, Inc.,
formerly Wings Over Mid-America, Inc.,
is a non-profit volunteer pilot organization recognized
by the Internal Revenue Service under I.R.C. sec. 501(c)(3).
All contributions are tax-deductible.

WINGSPAN is an Angel Flight Central quarterly publication edited and published by Christel Gollnick. Stories and content are supplied by staff and volunteers. A limited number of extra copies are available free of charge. Please contact us at: Angel Flight Central, Charles B. Wheeler Downtown Airport, 10 Richards Road, Kansas City, MO 64116 if your address has changed, you are receiving duplicates, or if you would like to be removed from this mailing list.

Angel Flight Central Office

Phone: 816-421-2300

Fax: 816-421-2409

E-mail: wings@angelflightcentral.org
www.angelflightcentral.org

Request Assistance and Information

Nationwide:

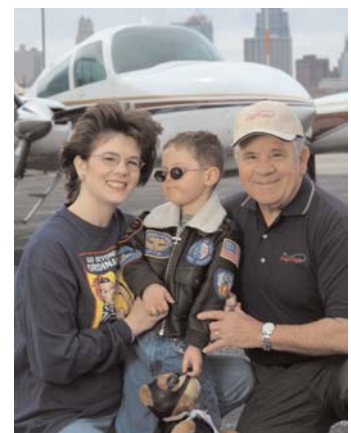
1-877-621-7177

THANK YOU TO JOHN W. KENNEDY AND
BLUECROSS BLUESHIELD OF KANSAS CITY
FOR INCLUDING ANGEL FLIGHT CENTRAL
IN THEIR RECENT ANNUAL REPORT
WITH THE PHOTO BELOW.



BlueCross BlueShield
of Kansas City

An Independent Licensee of the
Blue Cross and Blue Shield Association



Angel Flight Missions Team links the needs of two different families with one pilot willing and able to help

Both volunteers and staff work behind the scenes daily to help hundreds of people in need

Angel Flight is the connection between needs and air transportation resources in our communities; the link between despair and hope. Many people, both staff and volunteer, work behind the scenes making Angel Flight's mission of "giving hope wings" possible. One special group is the Missions Team.

The Missions Team's job is to serve passengers and support volunteer pilots who generously donate their time, talents and flight expenses to Angel Flight. These mission screeners and coordinators answer requests for assistance, screen potential passengers, educate requesters and passengers about the unique aspects of general aviation, work to build strong relationships with referral resources and small airports, verify need for assistance, obtain written medical approval for patients to fly in small airplanes, issue and file liability release forms, and carry a pager 24/7 to assist with last-minute mission flight changes. The team also communicates with linking Angel Flight regions on the pilot and passengers' behalf, manages the online mission database, navigates pilots through the coordination process, cancels, reroutes and reschedules missions due to inclement weather and appointment changes, reports mission statistics and many more tasks.



Heart of America WING Volunteer Pilot Tony Kostusik helps three siblings who are suffering from a brittle bone disease and another woman whose liver has failed. The two families flew from their homes in Arkansas to medical facilities in St. Louis, MO.

Photo provided by AFC Volunteer Pilot Tony Kostusik

It is also this team's job to leverage the generosity of the pilots in the most productive, practical and safe manner. Usually this means scheduling mission flights around the passenger's need with only one passenger and their companion on each flight. However, occasionally schedules coincide and it is possible for one pilot to help multiple families at once.

This is exactly what happened recently for Heart of America WING Volunteer Pilot Tony Kostusik who helped two

families (four patients) fly from their homes in Arkansas to St. Louis, MO. 3-year-old Shalom, 8-year-old Katherine and 12-year-old Rebekah were all seeking treatment at the Shriner's Hospital for a brittle bone disease and club foot. Kimberly, 48, visited Washington University for her liver failure. Both families were thankful for Angel Flight's and Kostusik's help in a time of need. And, Kostusik expressed his gratitude to the Missions Team for allowing him the opportunity to lend a helping hand and "give hope wings."

ON THE HORIZON

Please contact AFC Development and Outreach Director Aimee Patton for more information on any of the meetings and events listed below at 816-421-2300, ext. 205 or aimee@angelflightcentral.org.

January 13, 2006--Flight School Luncheon:
An Introduction to Angel Flight
Noon, AFC Office, Kansas City, MO

January 20, 2006--Board of Trustees Meeting
3:00 pm, AFC Office, Kansas City, MO

February 7, 2006--Flight School Luncheon:
An Introduction to Angel Flight
Noon, Springfield, MO

February 10, 2006--Flight School Luncheon:
An Introduction to Angel Flight
Noon, AFC Office, Kansas City, MO

March 10, 2006--Flight School Luncheon:
An Introduction to Angel Flight
Noon, AFC Office, Kansas City, MO

April 14, 2006--Flight School Luncheon:
An Introduction to Angel Flight
Noon, AFC Office, Kansas City, MO

April 21, 2006--Board of Trustees Meeting
3:00 pm, AFC Office, Kansas City, MO

April 22, 2006--WING Spring Seminar:
Outreach Volunteer Discussions, Updates and Training
8:00 am-2:00 pm, AFC Office, Kansas City, MO

April 22, 2006--HEROES of the HEART Celebration:
Volunteer and Donor Recognition Event
6:00 pm, Charles Wheeler Downtown Airport,
Kansas City, MO

"Because of our son's cancer, worry of exposure to deadly germs and financial issues, Angel Flight helped fly our son. We forgot about the pain and fear and were able to laugh again.

How can we thank everyone for emotionally saving out family's life?"

Angel Flight Passenger
Austin's mother, Sue



9-year-old Austin (center) and his friend Nathan with AFC Volunteer Pilot William Wagner. Austin's immune system has been suppressed as his body fights cancer cells making it difficult for him and his family to travel through large airports.

Photo provided by Austin's mother, Sue

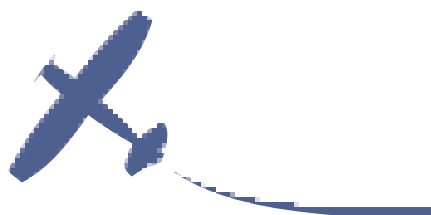
Angelic voice an inspired gift of thanks Young Angel Flight passenger sings "Angels Among Us"

When Development and Outreach Director Aimee Patton listened to a CD that was included in a thank you note from a young Wisconsin boy and his parents, she knew she had to share it with as many people as possible and started with the rest of the staff.

"Sometimes we [the staff and volunteers] forget in our busy days and nights of working to make connections between passengers and pilots that what we do really makes a difference. Listening to Austin sing about ordinary people helping each other in times of need just struck a chord and I couldn't stop the tears from streaming down my cheek," said Christel Gollnick, ceo/executive director. "It is really a wonderful gift that both motivates and inspires us to keep forging ahead in growing our mission.

Austin, despite dealing with the challenges and pain of his cancer and treatment, loves to sing according to his mother. "He sings every chance he gets," she said. "He's not shy at all."

After a few phone calls, Patton and Gollnick obtained permission to use the song, and worked with David Albright, a professional videographer and producer who also works for Hallmark, to put together a short DVD using Austin's voice in the background. The DVD showcases the mission of Angel Flight, explains the basic facts and displays many images of the pilots and passengers involved in the organization. If you would like a free copy of this DVD for yourself or to share our story with your friends and colleagues, please contact Aimee Patton at 816-421-2300, ext. 205 or aimee@angelflightcentral.org.



Give Hope Wings Benefit sells out in Chicago area

Great Lakes WING helps close Angel Flight Central's 10th Anniversary year with success

300 Angel Flight Central family members and friends gathered for the Great Lakes WING's most successful event to date on Saturday, October 22, 2005. Jasper and Marian Sanfilippo hosted the group for the third year at their estate. Attendees enjoyed an organ and vocalist concert in their home, the Victorian Palace, and then delighted in exploring the Carousel Building and



Give Hope Wings Benefit Chairperson Rebecca Harris with Jasper and Marian Sanfilippo who hosted Angel Flight in their home for the event. Photo provided by AFC

its many musical machines, restored locomotive, clocks and full-size operating carousel.

If you have not yet attended this event or want to share this incredible experience with your friends, mark your calendar for the 4th Annual Give Hope Wings Benefit at the Sanfilippo Estate in Barrington Hills, IL on Saturday, October 21, 2006!

THANK YOU TO OUR SUPPORTERS!

Cash Donors

9/21/2005 to 11/30/2005

\$10,000 to \$24,999

BlueCross BlueShield of Kansas City/John W. Kennedy
Stan and Maggie Guillaume
Kansas University Medical Center
Pioneer Services/Thomas and Denise Holcom

\$5,000 to \$9,999

Angel Flight America HSEATS Grant/Mercy Medical Airlift
Bank of Blue Valley
Children's Mercy Hospital
Financial Associates
LabOne
Phil and Patty Love
Mutual Fund Store
St. Lucas United Church of Christ
Union Bank

\$2,500 to \$4,999

Angel Flight America
Great America Barbeque and Balloons
Jewel-Osco
Johnson County Bar Association

\$1,000 to \$2,499

George and Mary Athans
Auxiliary of the Medical Center of Independence
Andy and Keri DeMarea
David Emerson
Glen and Chris Harnden
Susan Hippler
Michael and Mary Imel
Michael Lepore
M & R Printing
John and Gynette Major
Ed and Geri McKeown
Murphy Tractor and Equipment Company

Olathe Medical Center
Sam's Club Foundation
Jasper and Marian Sanfilippo
Jeffrey Sanfilippo
Mark Tennison

\$500 to \$999

Rubin Alvarez
Anonymous
Fritz and Sandy Edmunds
John Deere Company
David and Nancy McInerney
Robert Reynolds

\$300 to \$499

Michael and Paula Gaboury
Ruth and Anthony Guillaume
Nancy Ingram
Lee Kunze
Liberty Christian Church
Modern Day Veterans #294
Rotary Club of Smithville
Walmart Foundation

Adopt-an-Angel Flight

\$300 Cash Donation per Flight
9/21/2005 to 11/30/2005

3 Flights

Michael Sorenson

2 Flights

Jim Hartfield
Greg and Connie Kaaz
James and Gwendolyn Patton
Steven Pearson
J. Philip Walthers

1 Flight

Argosy Casino
Janice Atchinson
Dean Athans
Michael Baraz
Thomas Baumann

Gary Becker
Patrick Burke
Raymond Chisholm
William Cristy
Jim Kartheiser and Katherine Kennedy-Kartheiser
Carrie Kazimour
Louis Klemp
Alexander Korzhuk
John and Gynette Major
Anna May Miller
Brenda Mills
Lee and Betty Mook
Stewart Morgenstein
Christopher and Terry Neigel
David Poitras
David and Laura Rainey
William and Beth Reinke
Schaller Construction, Inc.
Bob Utter
Gay Wenger
Steve and Cheryl Wright
Thomas and Pamela Zumm

In-Kind Donors \$300+ 9/21/2005 to 11/30/2005

Conklin and deDecker:
Aircraft and Aviation Services
Valuation Software Update

Executive Beechcraft:
Office Space

Mayer, Hoffman, McCann,
P.C./CBIZ:
Accounting Services

Shughart Thomson & Kilroy:
Legal Consultation/Services

TMX:
Toll-Free # Routing to Pager
Service

Leaders thanked for their service



Board Chairman/President Andy DeMarea (right) thanks outgoing Board member Tim Frets for serving a full set of terms. If you are interested in making a significant leadership commitment to Angel Flight's mission either on the Board or in your local WING, please contact CEO/Executive Director Christel Gollnick. Photo provided by AFC



NON-PROFIT ORGANIZATION
U.S. POSTAGE PAID
SHAWNEE MISSION, KS
PERMIT #1122

Charles B. Wheeler Downtown Airport
10 Richards Road
Kansas City, MO 64116

If you receive duplicates of this publication,
please share with a friend!
Please notify AFC of address corrections.

1-877-621-7177
www.angelflightcentral.org

IMPACT: Mission Facts

Statistics based on Angel Flight Central data
from 8/1/1995 to 11/30/2005

missions flown **6,869**

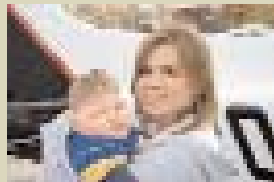
980 volunteer pilots roster

charitable hours flown **34,694**

93% of contributions supports
program services

Every **\$1** cash given allows **\$3**
of flight services to be delivered

**Be it a child requiring medical treatment in
another area of the country, or an adult
requiring immediate travel due to a family or
national crisis, Angel Flight Central attempts
to match each special need with
a volunteer pilot who can help.**



*Spirit of St. Louis
WING Volunteer Pilot
Graham Bloy flew
4-year-old Lilian and
her mother Jeannie to
North Carolina from
treatment for Cerebral
Palsy at St. Louis
Children's Hospital.*

*Photo provided by AFC Volunteer
Pilot Graham Bloy*

*1-year-old Angel Flight Passenger Austin and his mother
flew with AFC Volunteer Pilot Tom Nichol in October 2005
from Columbia, MO to Chicago for monthly treatment.
Austin suffers from a brain bleed which is affecting his
growth and development. Photo provided by AFC Volunteer Pilot Tom Nichol*



Name _____
Address _____
City _____
State _____ Zip _____ Phone _____
E-mail _____

I'm enclosing:

- | | |
|----------------------------------|---|
| <input type="checkbox"/> \$25 | Adopt-an-Angel Flight |
| <input type="checkbox"/> \$50 | <input type="checkbox"/> \$300 = 1 Flight |
| <input type="checkbox"/> \$100 | <input type="checkbox"/> \$600 = 2 Flights |
| <input type="checkbox"/> \$500 | <input type="checkbox"/> \$1,200 = 4 Flights |
| <input type="checkbox"/> \$1,000 | <input type="checkbox"/> \$3,000 = 10 Flights |
| <input type="checkbox"/> \$_____ | <input type="checkbox"/> \$6,000 = 20 Flights |

I am also interested in learning about:

- Planned Giving**
- Giving In-kind Services and/or Gifts**

**Please mail in a stamped envelope your check
or money order payable to:**

Angel Flight Central, Inc., 10 Richards Road,
Kansas City, MO 64116

This gift is made:

- In memory of**
(name) _____
- In honor of**
(name) _____
- Birthday Recovery
- New Arrival Holiday
- Graduation Marriage
- Anniversary Other

Please notify:
Name _____
Address _____
City _____
State _____ Zip _____

Join the Angel Flight Team!

Our passengers need your help.
Please indicate below which areas
you are interested in sharing with
Angel Flight Central, Inc.

- Volunteer Pilot and Aircraft**
- Passenger and Community Awareness**
- Pilot Recruitment and Activities**
- Public Relations**
- Financial Development**
- Mission Screening and Coordination**
- Administrative Support**
- Special Events**
- Starting a Local WING**

GIVE ON-LINE
at
www.angelflightcentral.org

**VISA and Mastercard
Credit Cards are now accepted
on a secure area
of our web site.**

WISH LIST

- ♦ Digital Camera
- ♦ Upright Vacuum Cleaner
- ♦ Stamps
- ♦ Blank Data CDs and Cases
- ♦ Letter Folder
- ♦ Copy Paper

Thank you!